

# example

## CHATEAU LANE COMMUNITY RESIDENCE LIFETIME ASSISTANCE, INC.

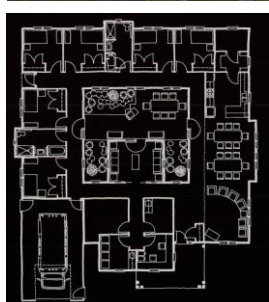
11 Chateau Lane  
Greece, New York

### MASCOT INC.

1577 W. Ridge Rd  
Rochester, NY 14615

### PROJECT DESCRIPTION

This new 3,534 SF supervised community residence was designed as an Independent Residential Alternative (IRA) in accordance with the requirements of the New York State Office of People with Developmental Disabilities (OPWDD). The plan revolves around a central courtyard so the residents, with Alzheimer's-like symptoms can have access to the outdoors in a secured environment, and have a loop corridor for controlled wandering. The fully handicap accessible single floor program included informal open communal areas for cooking, eating and living; six rooms for sleeping, two baths, enclosed rooms for support management and medicine dispensing, laundry and a garage large enough for loading a handicap van.



### PARTICIPATION

All design and drawings were prepared by David Strabel independently which included design-grams and a full bid set of construct-grams complete with site work, mechanical and electrical drawings with CAD assistance from Allen Heurtley.

### DAVID STRABEL R.A.

Brockport, New York 14420  
585-637-5346  
dave@davidstrabel.com

architect