

example

PARK LODGE

SWEDEN TOWN PARK

4745 Redman Road
Sweden, New York

ARCHITECT

DAVID STRABEL R.A.

24 Tudor Road
Brockport, New York 14420

BUILDER

WHITNEY EAST, INC.

1504 Scottsville Road
Rochester, NY 14623

E-PLUMBING & PIPING, INC.

214 Hamlin-Parma Town Line Road
Hilton, NY 14468

WYCO MECHANICAL, INC.

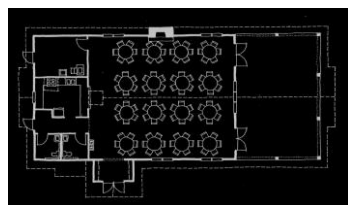
81 Shumway Road
Brockport, NY 14420

HEWITT-YOUNG ELLECTRIC, LLC

645 Maple Street
Rochester, NY 14611

PROJECT DESCRIPTION

Picturesquely positioned between a grove of old growth trees and a kidney shaped pond, this new 2,088 SF year-around park rental lodge with 864 SF attached porch includes a party/meeting room, warming kitchen and public toilet rooms. The party/meeting room is appointed with a gas fireplace, pine board & bead wainscot, acoustic absorbing cathedral ceiling and trimmed out with picture rail - tack board - chalk rail to accommodate the typical party paraphernalia of posters/certificates/photos in a managed way. The exterior employs decorative gable-end bracketted timber trusses, banded fiber-cement board & batton and shingle siding, and standing seam metal roof with a functional light cupola.



PARTICIPATION

All design and drawings were prepared by David Strabel independently which included design-grams and a full bid set of construct-grams for a New York State Wicks Law (multiple separate prime contractors), public works contract complete with site work, mechanical and electrical drawings.

DAVID STRABEL R.A.

Brockport, New York 14420
585-637-5346
dave@davidstrabel.com

architect