

example

GLOWINSKY & HARDING PEDIATRIC DENTISTRY SMALL TO TALL DENTISTRY FOR CHILDREN, PLLC

6 Sweden Lane
Brockport, New York

ARCHITECT DAVID STRABEL R.A.

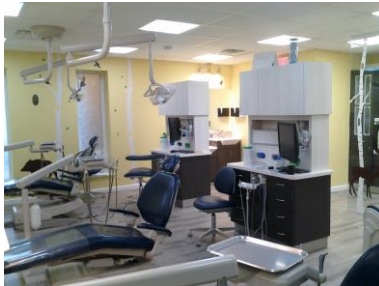
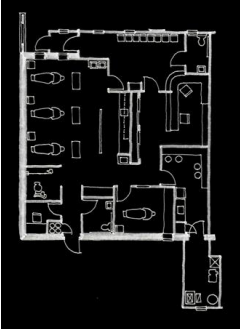
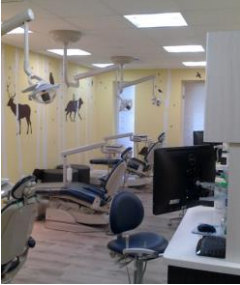
24 Tudor Road
Brockport, New York 14420

BUILDER BRENDON BASCOM

141 Grosvenor Road
Rochester, New York 14610

PROJECT DESCRIPTION

This 1,700 SF dentist's office tenant build-out is in a portion of a repurposed convenient store. This pediatric dentistry practice features a three chair open operator, a private operator, x-ray imaging area, support sterilization/dispensary areas, break room, business office, reception/waiting, mechanical and accessible toilet rooms.



PARTICIPATION

Preliminary design by Johnson & Lund, Inc. used to create tenant build-out permit set of construct-grams complete with mechanical and electrical drawings by David Strabel with CAD assistance from Steve Palmeri.

DAVID STRABEL R.A.

Brockport, New York 14420
585-637-5346
dave@davidstrabel.com

architect