

example

FIRST FEDERAL SAVINGS & LOAN ASSOCIATION BRANCH BANK

1880 East Avenue
Rochester, New York

ARCHITECT **MARTIN ROSE ASSOCIATES P.C.**

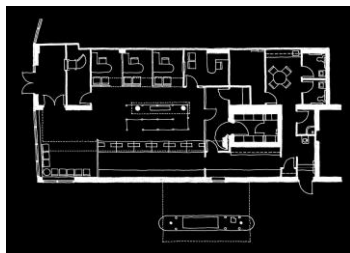
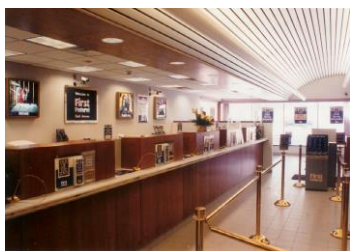
590 South Avenue
Rochester, New York 14620

BUILDER **MDR CONSTRUCTION, INC.**

53 Ogden Center Road
Spencerport, New York 14559

PROJECT DESCRIPTION

This 2,550 SF storefront tenant build-out converted abandoned retail space into a branch of a local savings and loan bank. The plan consisted of a vestibule with ATM, a vaulted lobby with a six station teller line, open cubicles for three sales associates, an enclosed office for the manager, a vault, counting, break and storage areas and a two lane drive-thru with teller window and ATM. Existing steel support posts in the lobby were disguised with classical wood columns and a free standing entablature.



PARTICIPATION

All design and drawings were prepared by David Strabel at Martin Rose Associates which included schematic plans and a full bid set of construction documents complete with structural, mechanical and electrical drawings.

DAVID STRABEL R.A.

MRA Martin Rose Associates P.C.
architects planners interior designers

590 South Avenue Rochester New York 14620 716 232 3470